

Nexus Insight Panel

Covid-19 attitude tracker, week 14 10th July 2020

Respondents = 356

Email - nexusinsight@nexus.org.uk

Join the panel at <https://www.nexus.org.uk/research-and-insight/insight-panel>

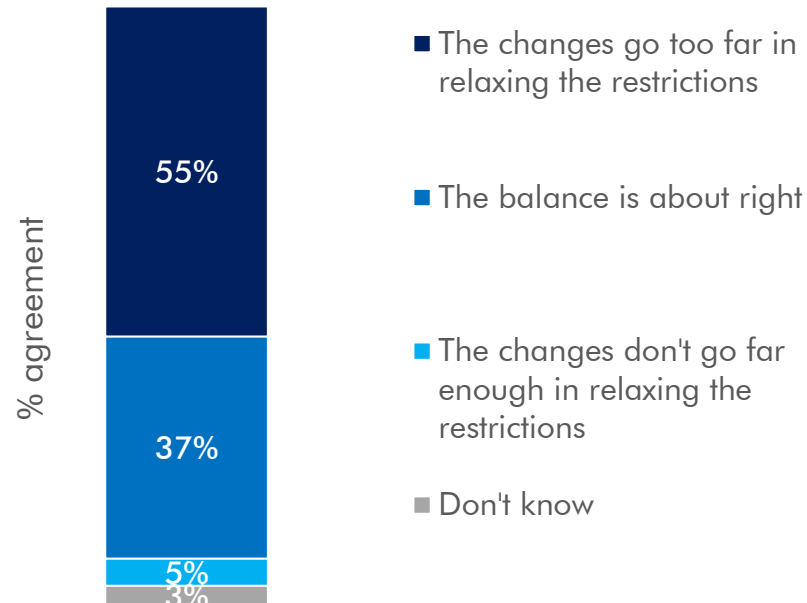
Contents

	Page No
• Mood	4
• Transport	11
• Travel and leisure	18
• Miscellaneous	25

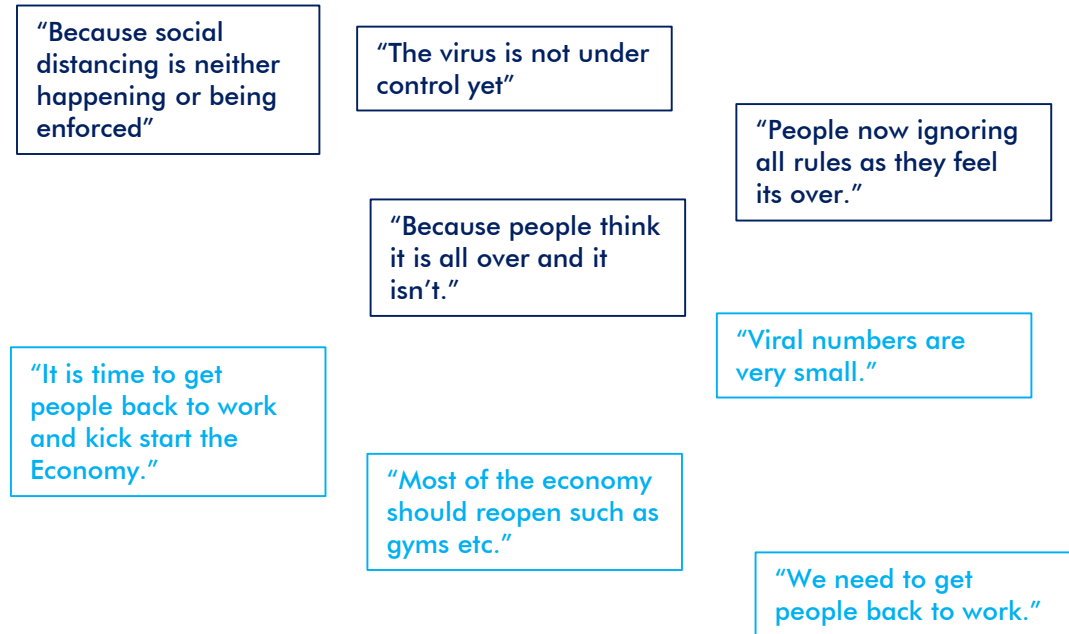
Mood

The majority still feel the easing of lockdown restrictions have gone too far. Those feeling changes have "gone too far" appear to be concerned about lack of adherence to the restrictions, whereas those feeling the easing "does not go far enough" appear to be concerned about the economic effects of continuing lockdown.

% agreeing with statement about relaxing restrictions



Why do you think that?



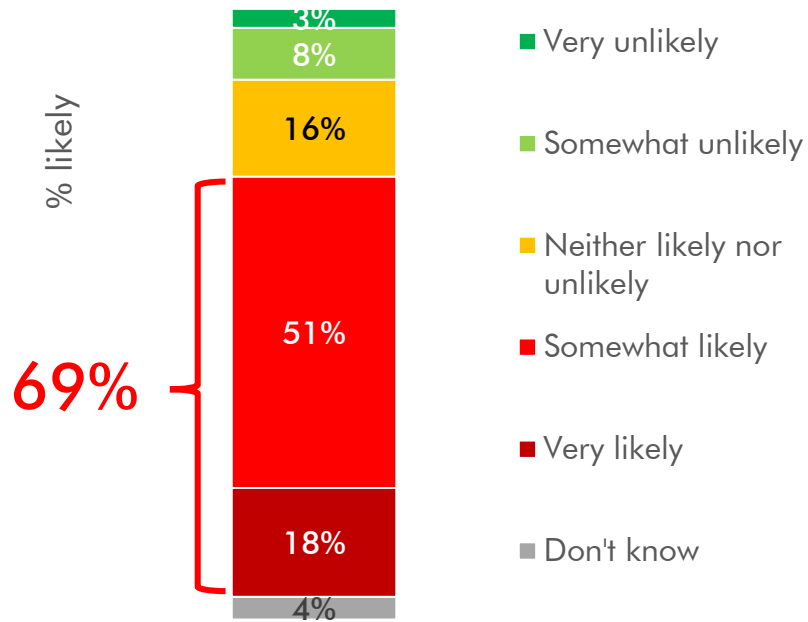
There have been several announcements over the past few weeks regarding easing lockdown. Generally speaking, what do you think about the changes to the lockdown restrictions?

Base: All respondents n=354

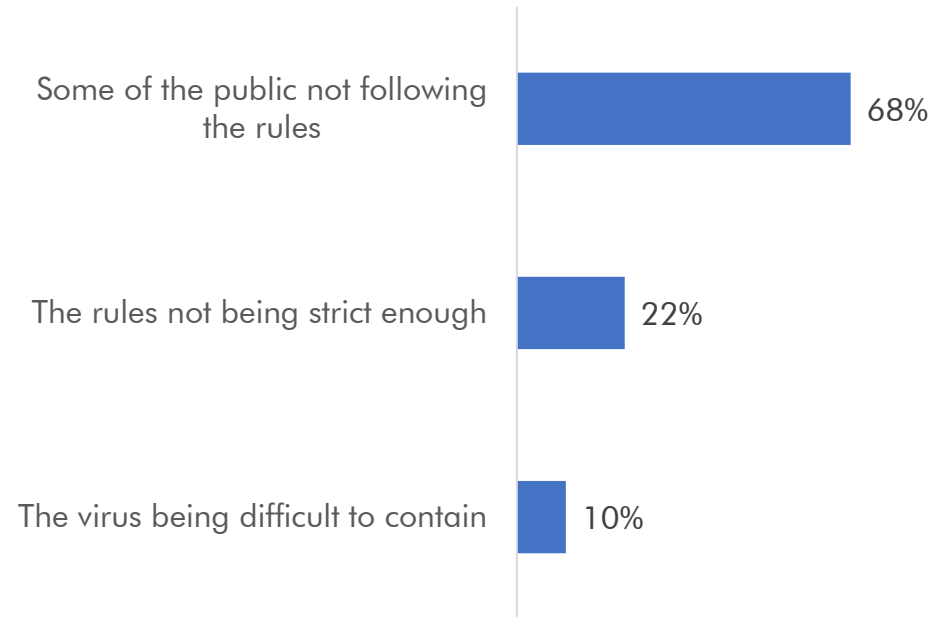
Please tell us why you think this? Base: All respondents who thought "too far" or "Not far enough" n=209

Over two-thirds believe there will be a local lockdown in our area, mainly due to some of the public not following the social distancing rules; of these nearly a third tell us they have “reduced some or all contact/activities”.

% how likely is a local lockdown in our region



% largest contributor to a potential local lockdown



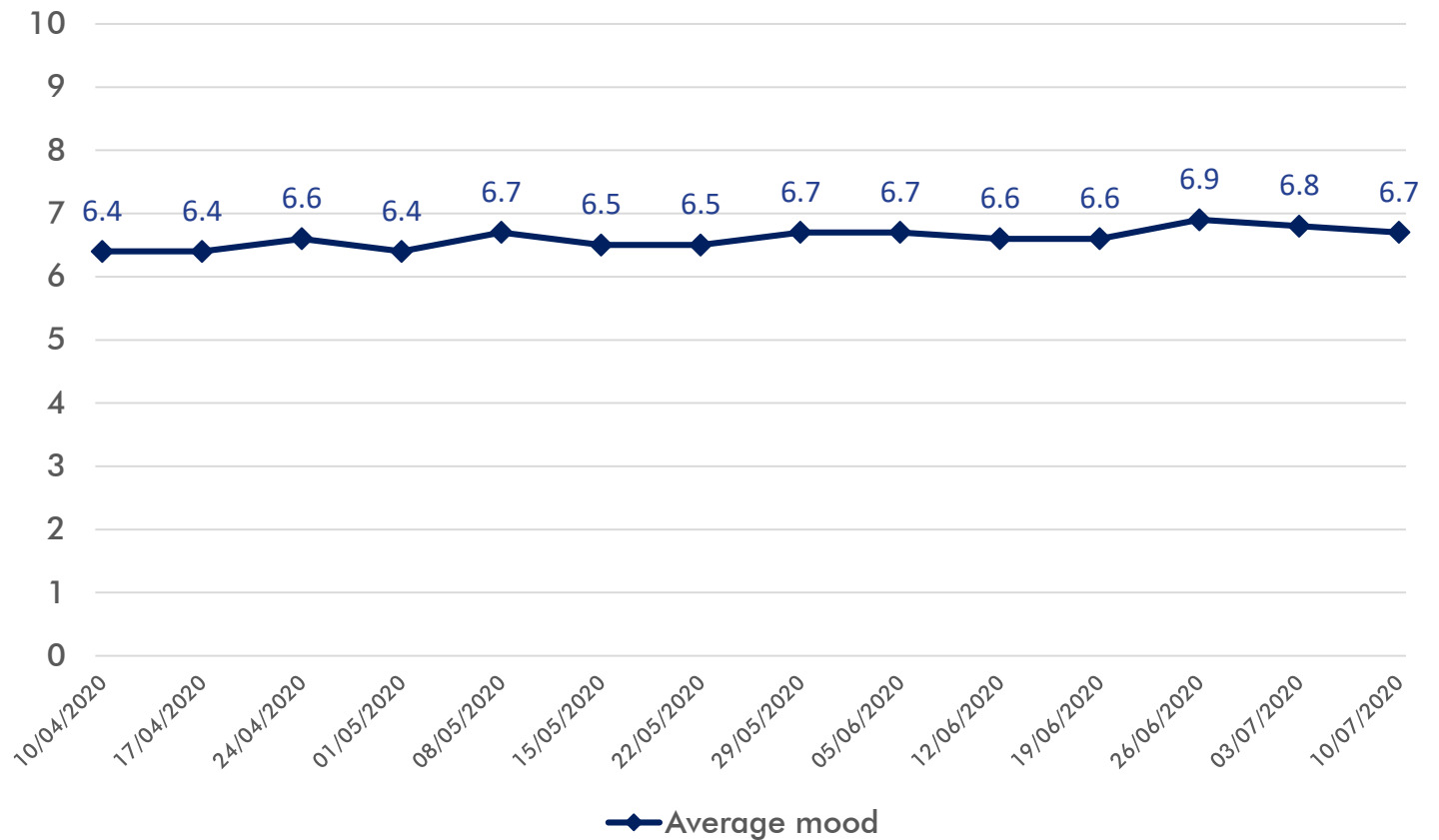
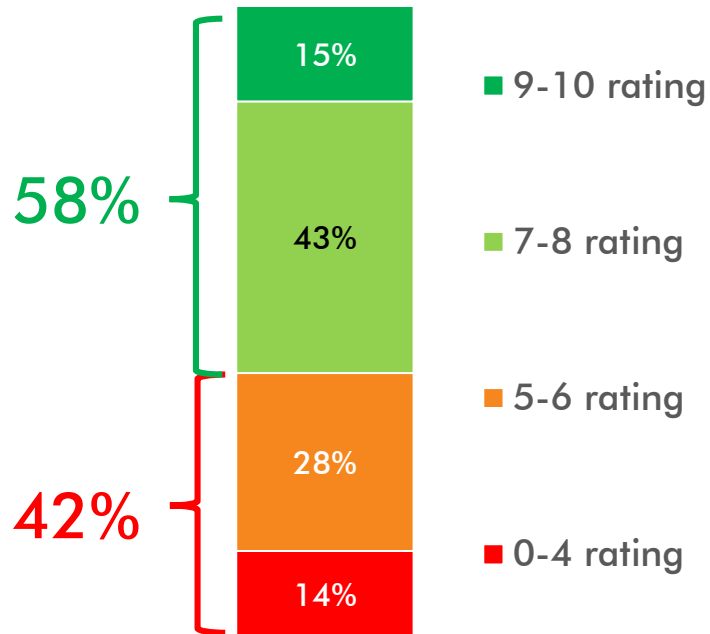
A number of locations have introduced local lockdowns including Leicester, Melbourne and parts of Spain as a result of rising cases in Covid-19. To what extent do you think a local lockdown in our area could occur over the next few months? Base: All respondents n=353

Which of the following, do you feel is the largest contributor to the risk of a local lockdown? Base: All respondents feeling a local lockdown is “likely”. n=242

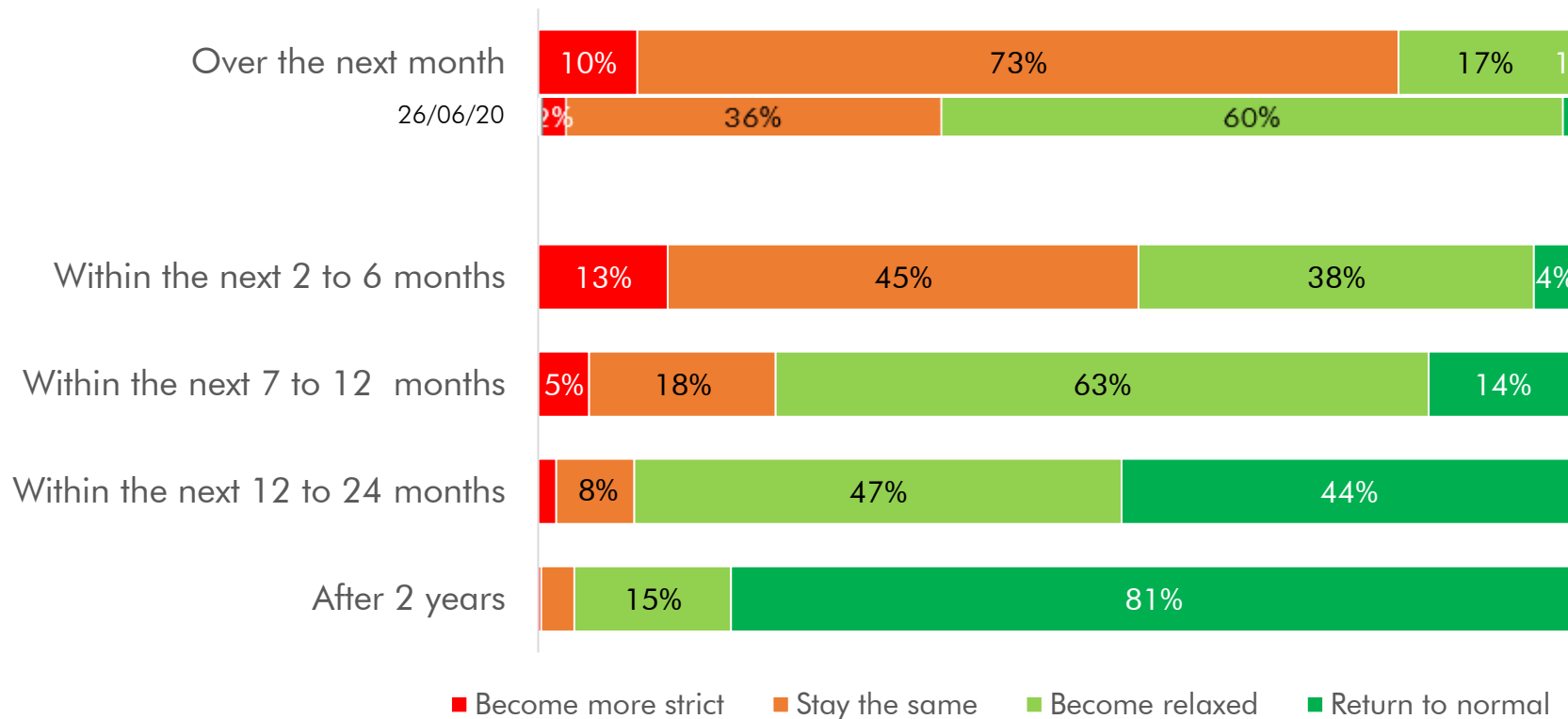
The average mood falls slightly again this week back to 6.7 out of 10.

Average mood
07/07 – 10/07/2020

6.7

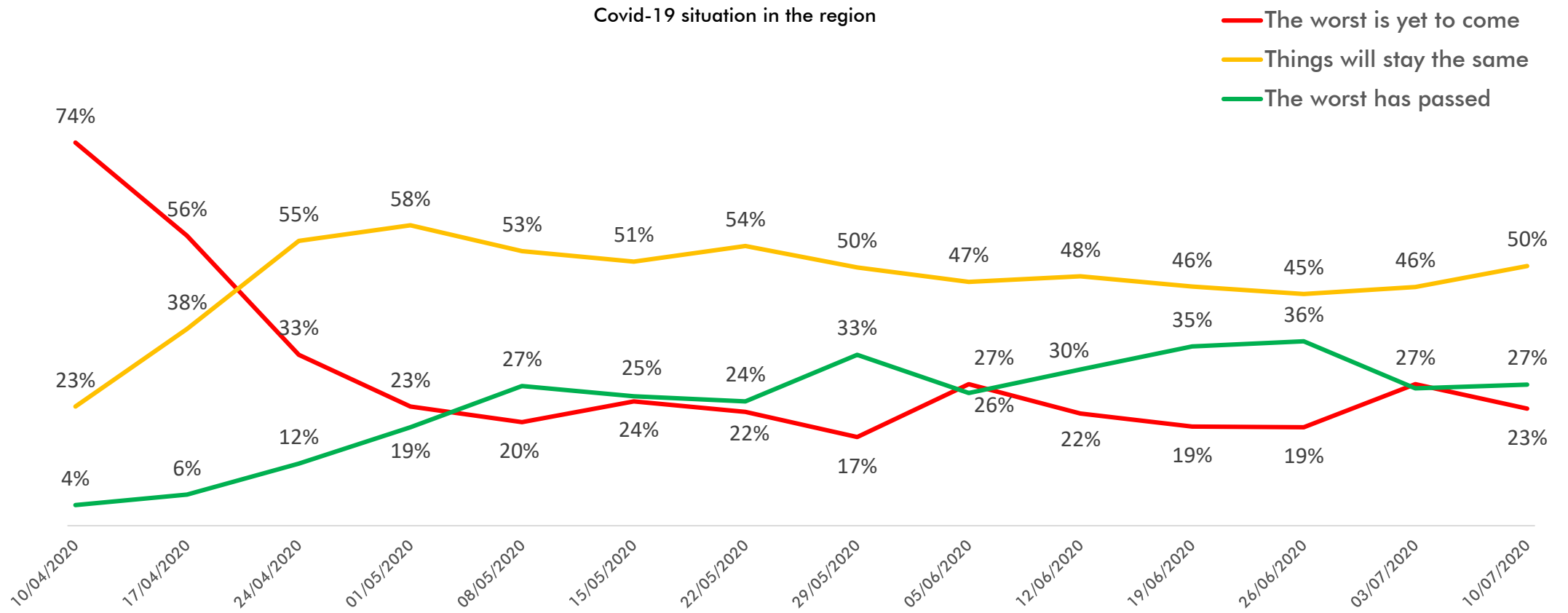


With the realisation there may be a local lockdown in our area, there is a feeling by the majority that social distancing rules won't become relaxed for at least 6 months while one in ten think the rules will become more strict within the next month.



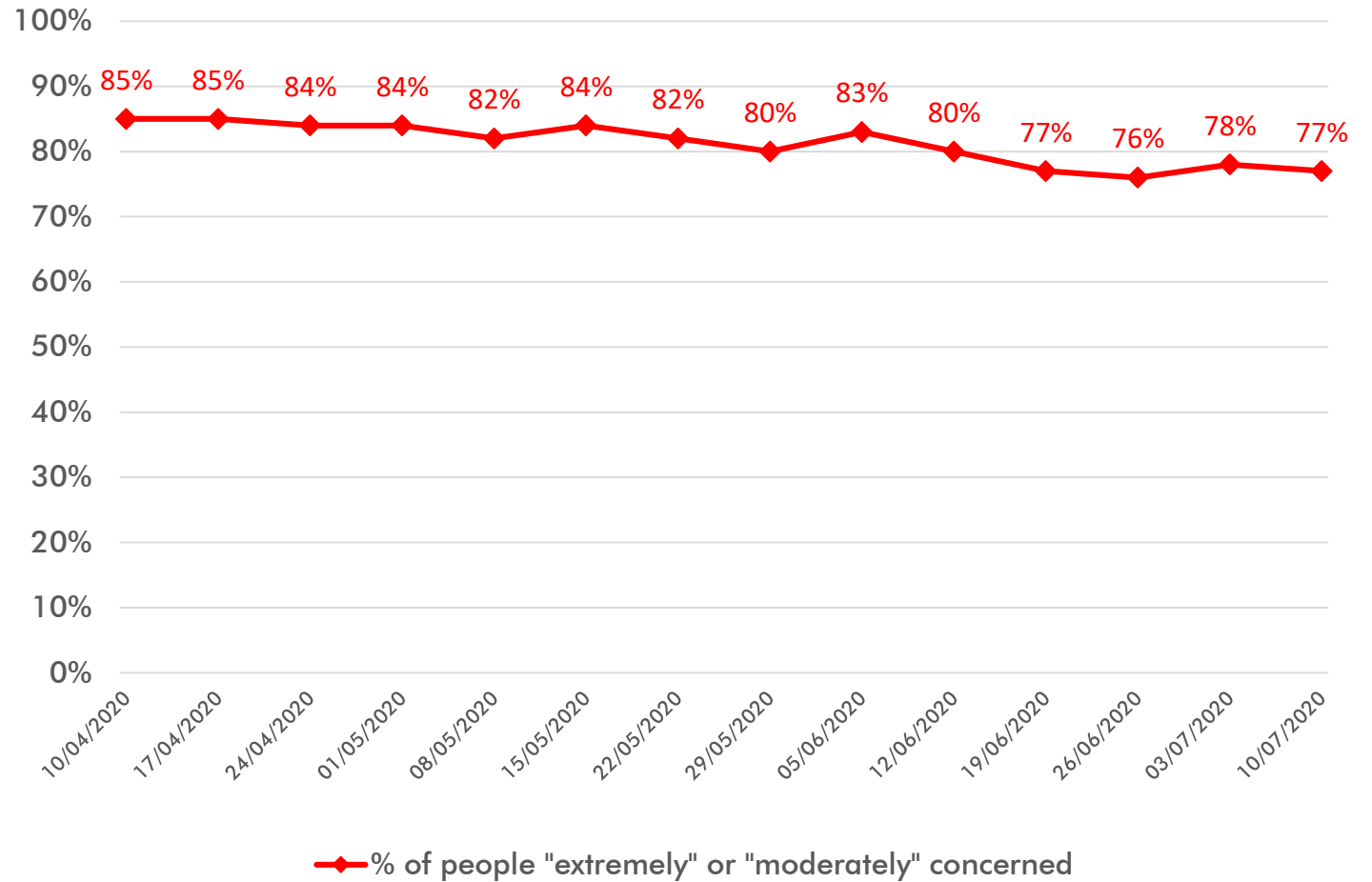
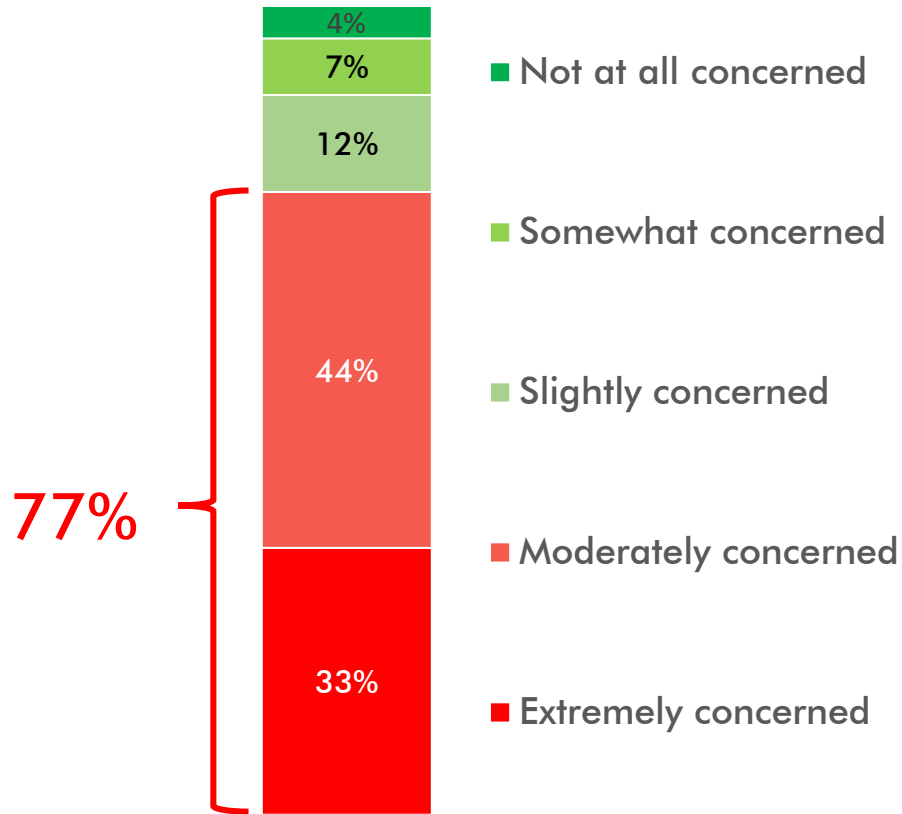
Given what you know today, how do you think social distancing rules will change? Base: All respondents n=356

Despite this, there has been a fall in those thinking “the worst is yet to come” with the majority telling us “things will stay the same”.



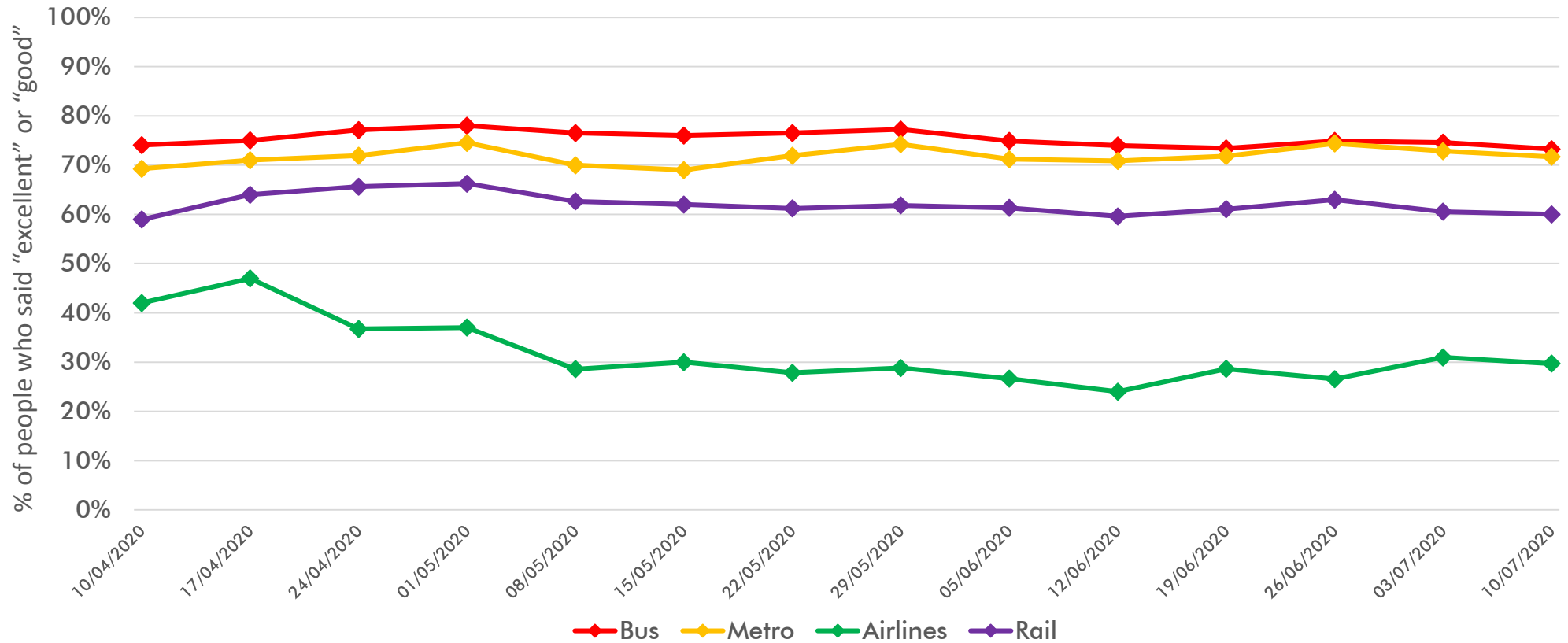
Thinking about Covid-19 in the our region, and the way it is going to change in the coming month, which of the following best describes your opinion? Base: All respondents n=346

Over three quarters are still “moderately” or “extremely” concerned about Covid-19.



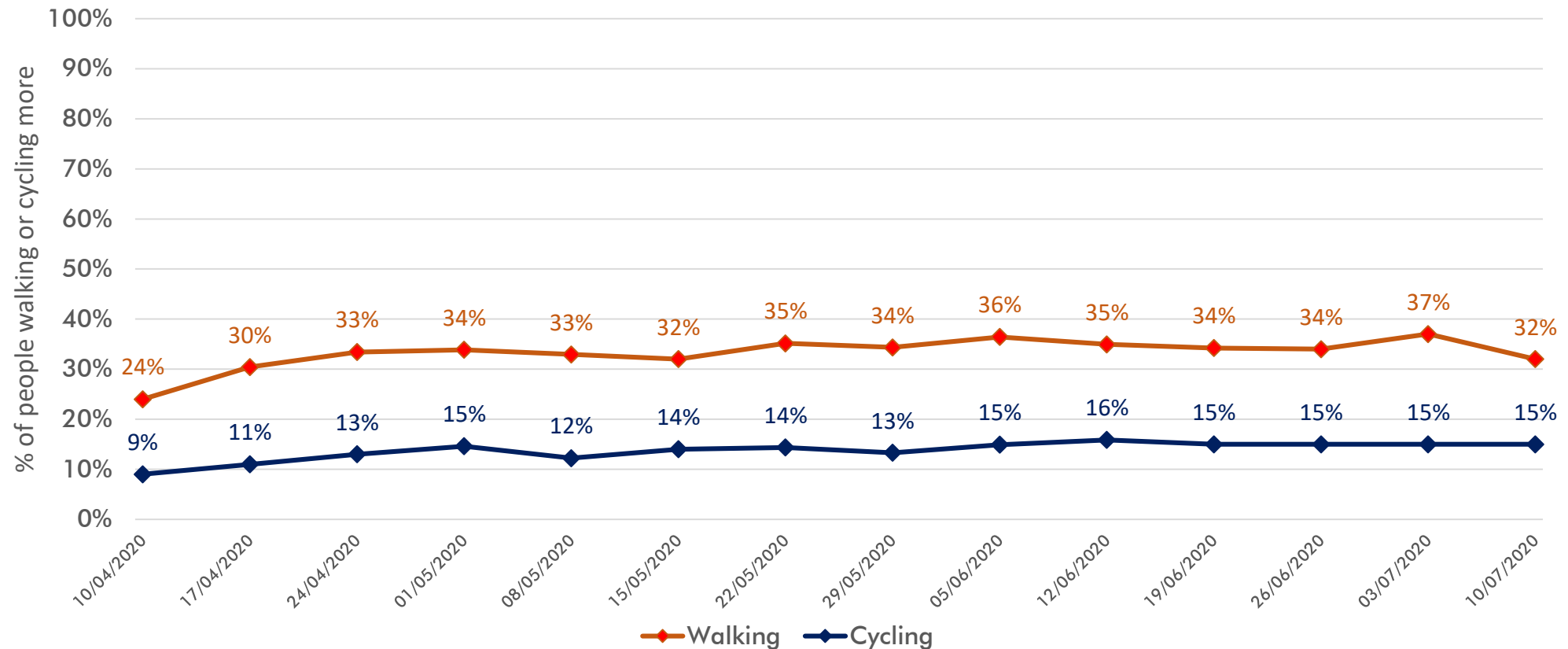
Transport

Perceptions of how transport providers have responded to the pandemic have remained fairly constant.



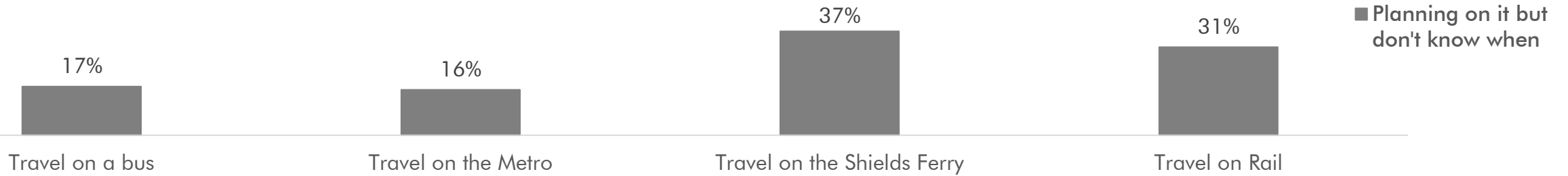
How do you think Bus/Metro/Airlines/Rail have responded to the pandemic? Base: All respondents (excludes don't knows): Bus n=291, Metro n=302, Airline n=268, Rail n=218

The return of the relatively poor weather last week has not diminished the urge to cycle more, it does though appear to have had an impact on those walking more.

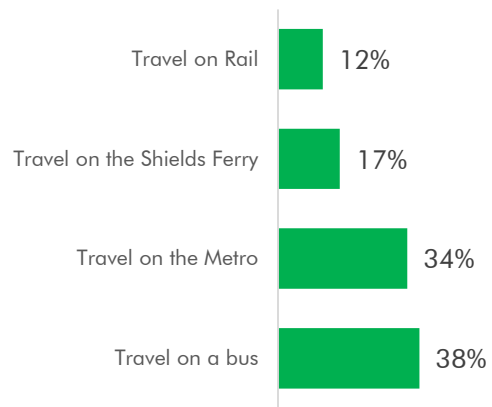


Are you cycling/walking any more or any less than you did before the Covid-19 outbreak? Base: All respondents n= 356

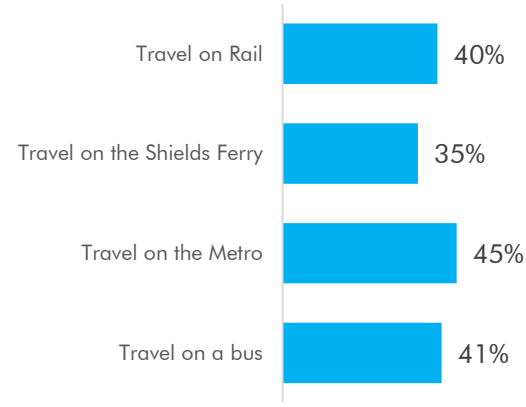
Nearly 8 out of 10 anticipate they will be making a journey on a bus or Metro within the next 6 months with over a third telling us it will be within the next month.



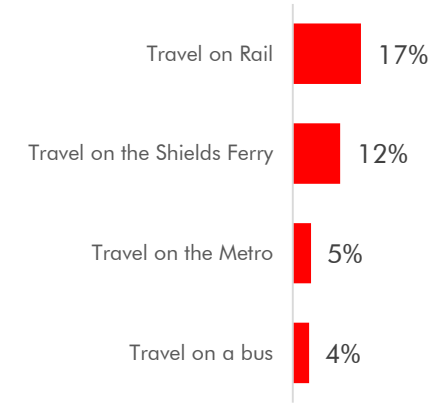
Within the next month



Within the next 2-6 months



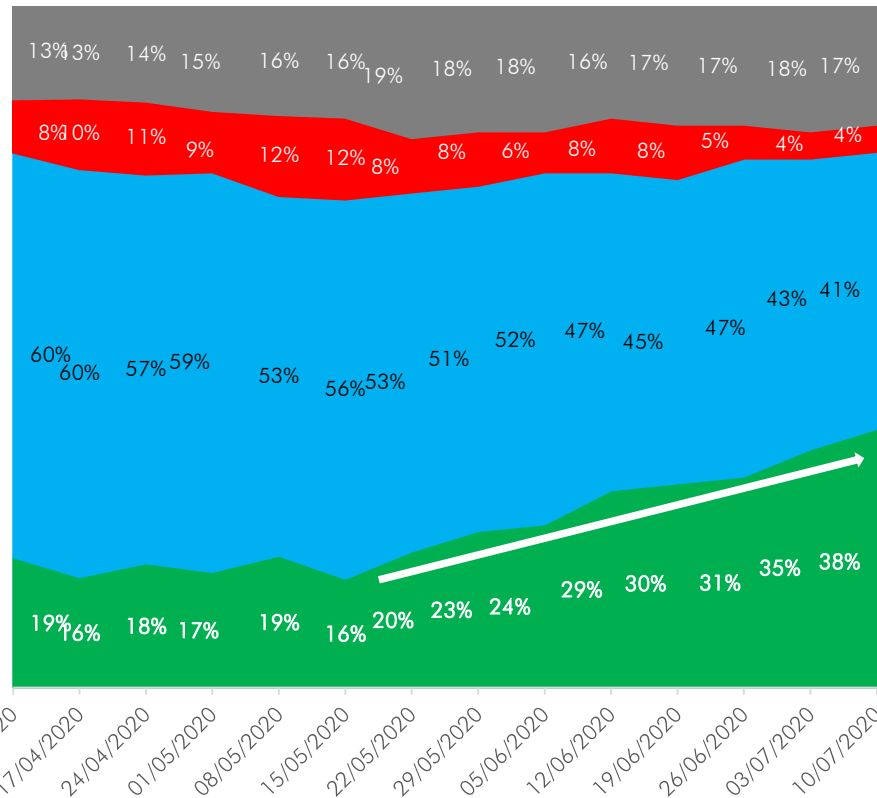
Within the next 7-12 months



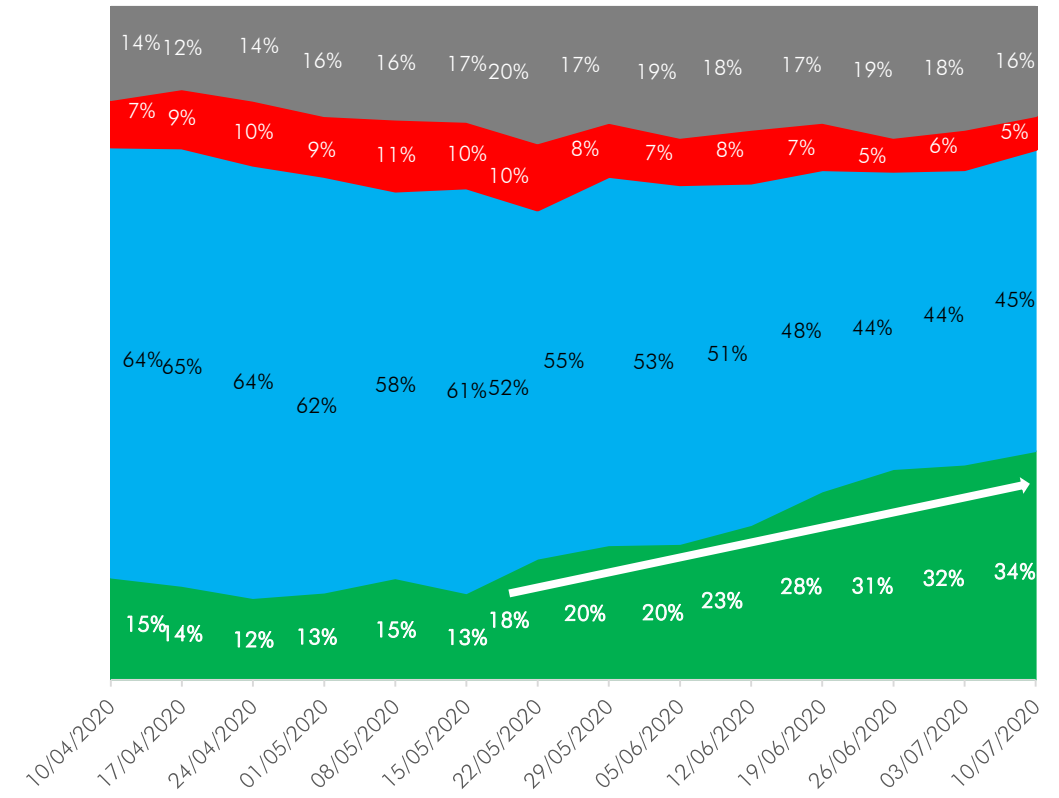
Given what you know today, when do you anticipate doing the following? Base: Bus n=244, Metro n=261, Ferry n=109, Rail n=193

We see a rise for the 8th consecutive week in the proportion of people anticipating using bus or Metro in the next month.

When will you next travel on a bus?

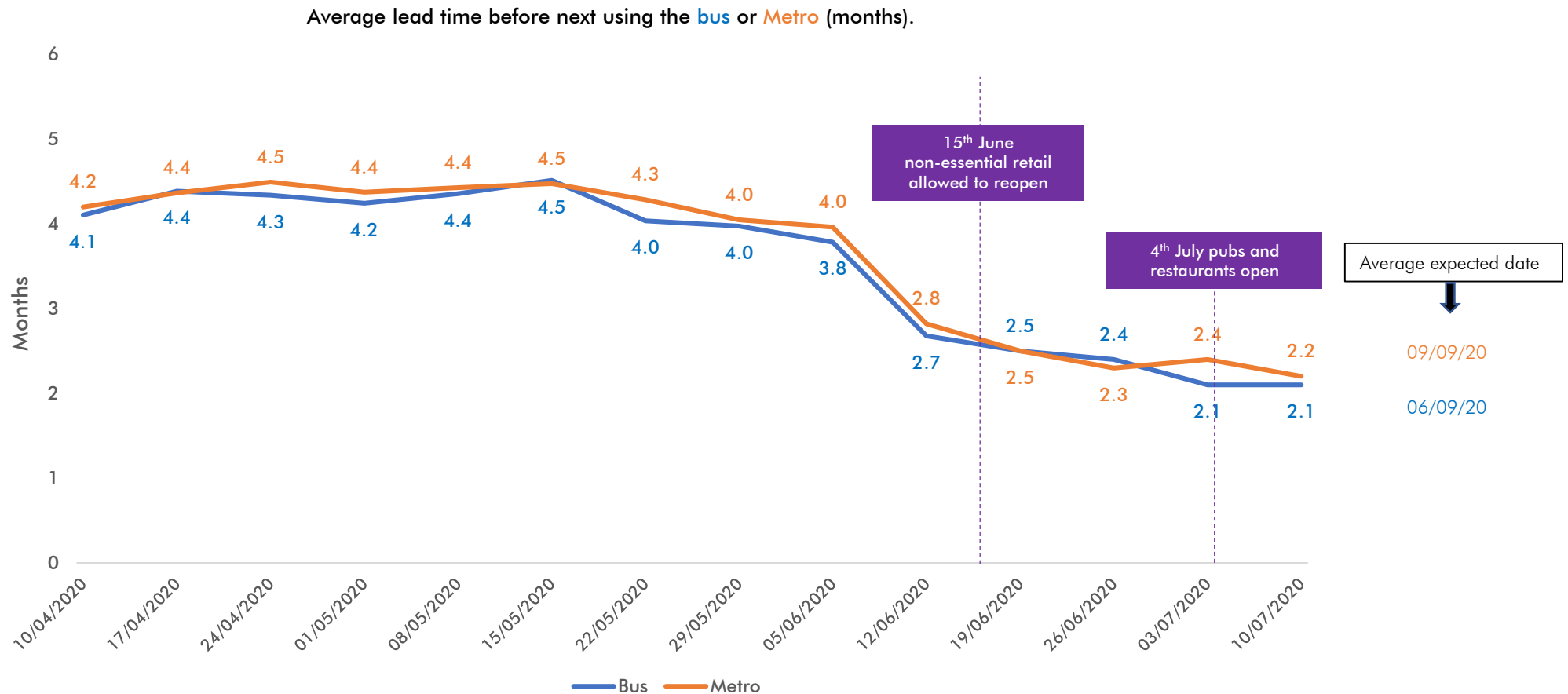


When will you next travel on the Metro?

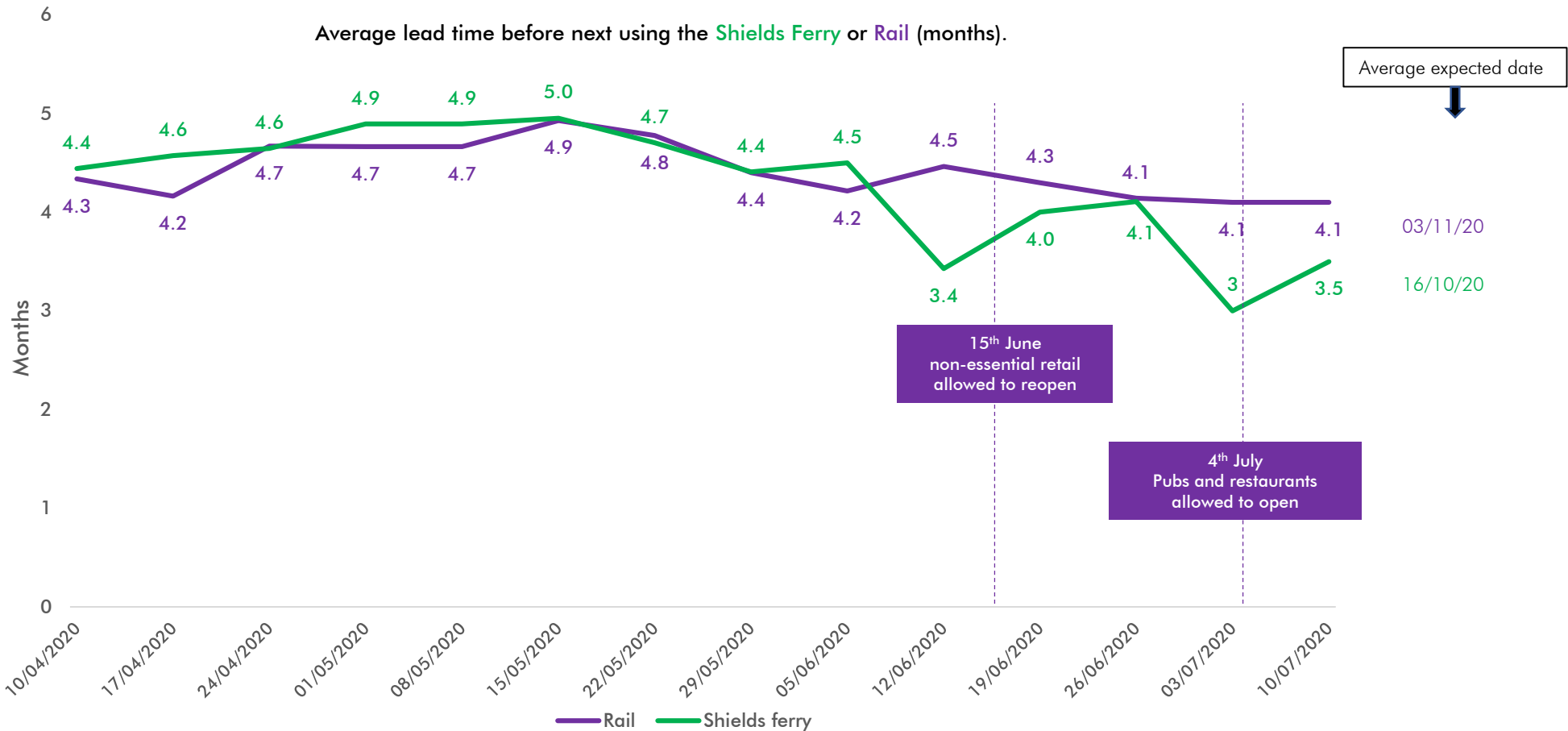


- Planning on it but don't know when
- Within the next 7 to 12 months
- Within the next 2 to 6 months
- Within the next month

The average lead time to next use the Metro has fallen to its lowest level this week, with the average expected date now the 9th of September.



Lead time for next using the rail remains steady, the anticipated date for using the Shields Ferry has lengthened by over 2 weeks.

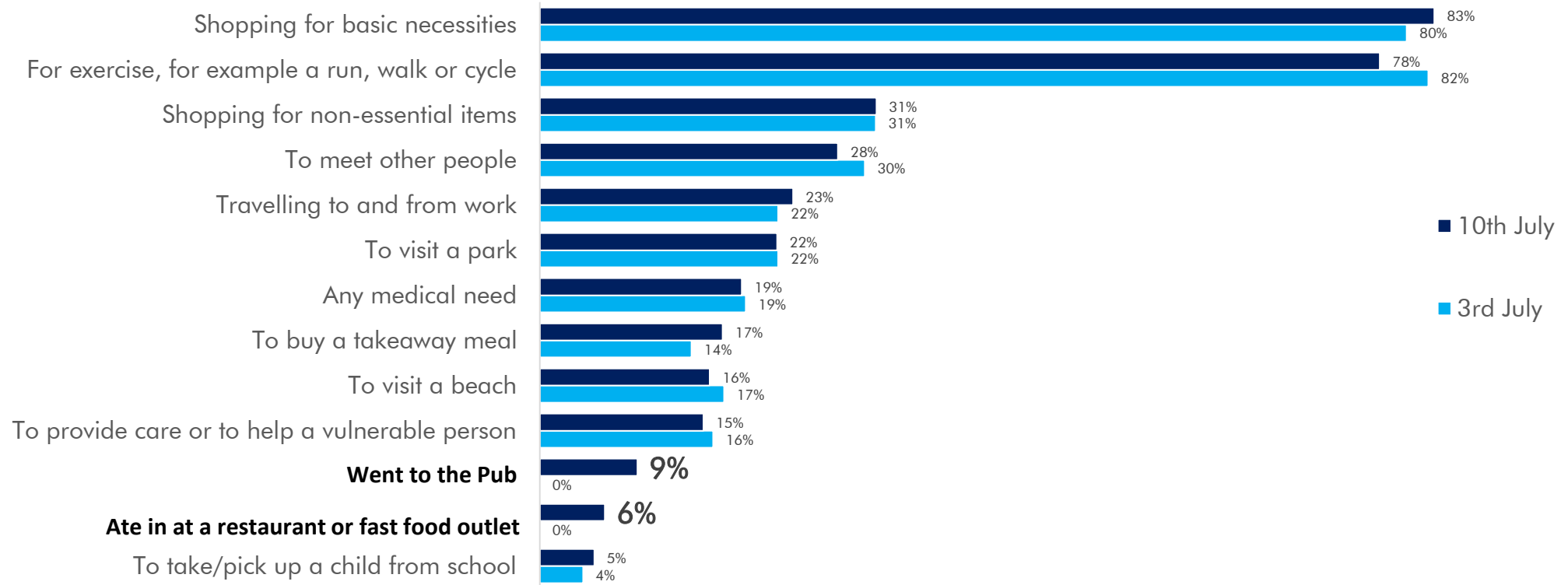




Travel and leisure

Some pubs and restaurants opened their doors on the 4th of July, just 1 in 10 ventured out to visit their local.

Reasons for leaving home over the previous week



In the past seven days for what reasons, if any, have you left your home? (tick all that apply)? Base: All respondents n=338

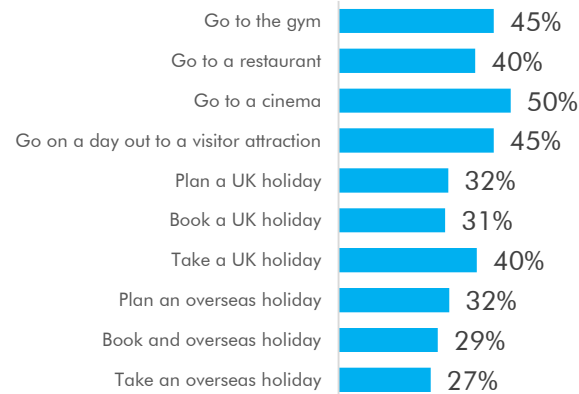
We can report there is an 11 pp rise in the proportion of people anticipating going for a meal out in the next month from 14% to 25%, this in a week where the Chancellor announced the “Eat Out to Help Out” scheme, which offers discounts on food and non-alcoholic drinks in the month of August.



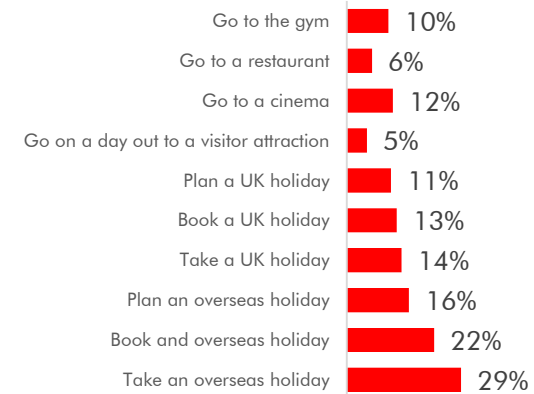
Within the next month



Within the next 2-6 months



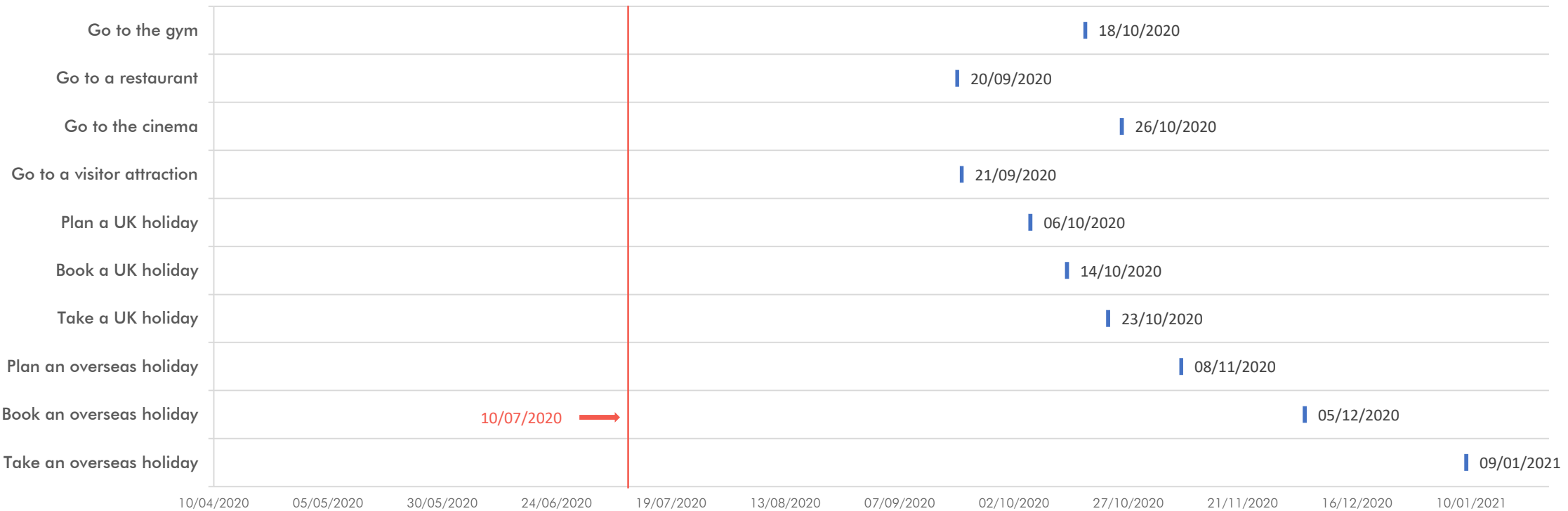
Within the next 7-12 months



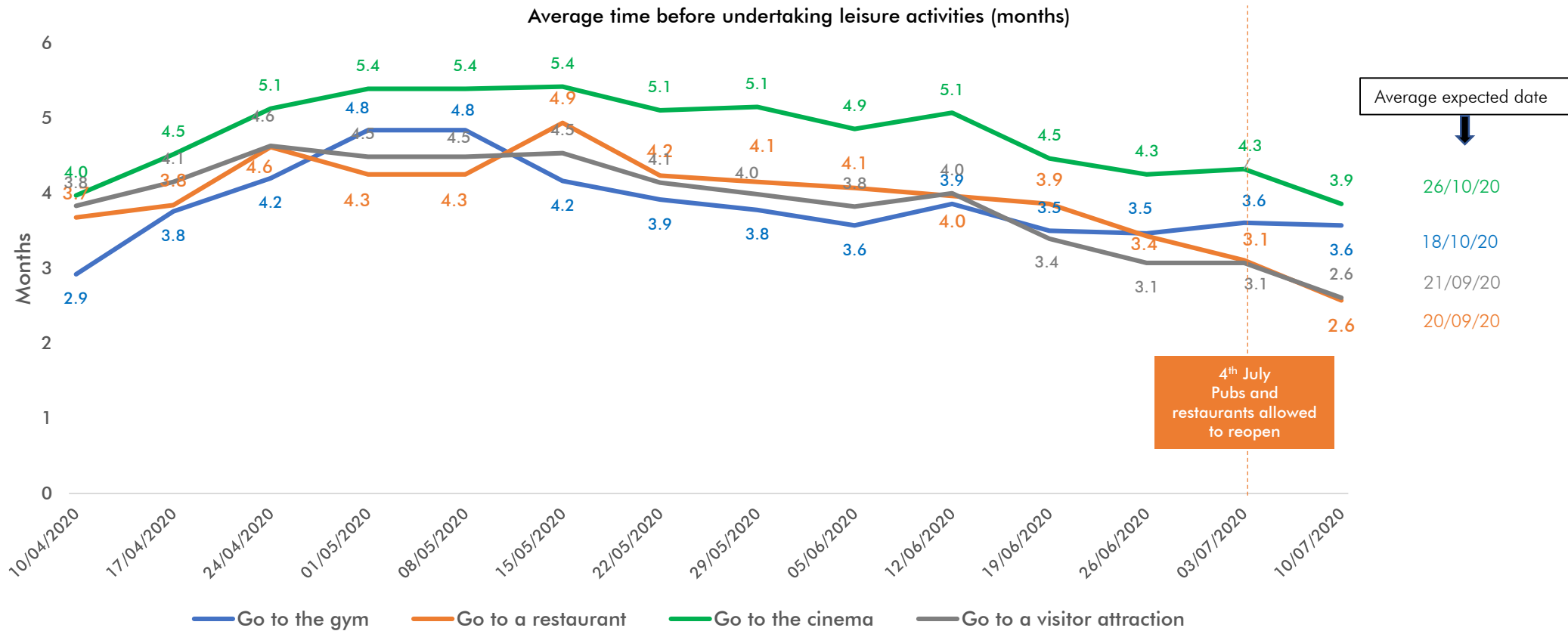
1 month 2 months 3 months 4 months 5 months 6 months 7 months 8 months 9 months 10 months 11 months 12 months

Of the three indoor activities; going to a gym, restaurant or the cinema, the most eagerly anticipated is going to a restaurant.

Expected point of doing each activity (average)

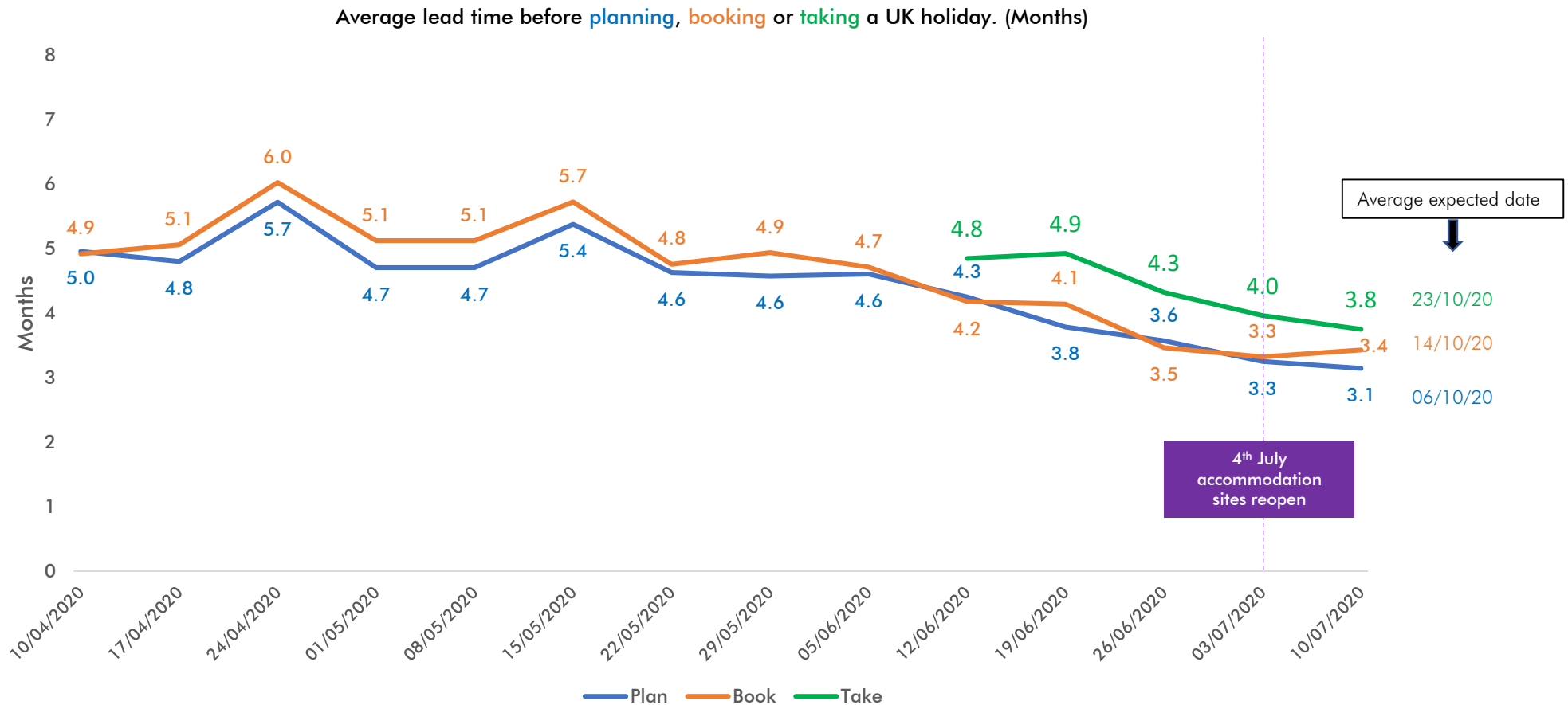


Average anticipated lead time for taking part in leisure activities are either shortening or remaining constant for all activities monitored.



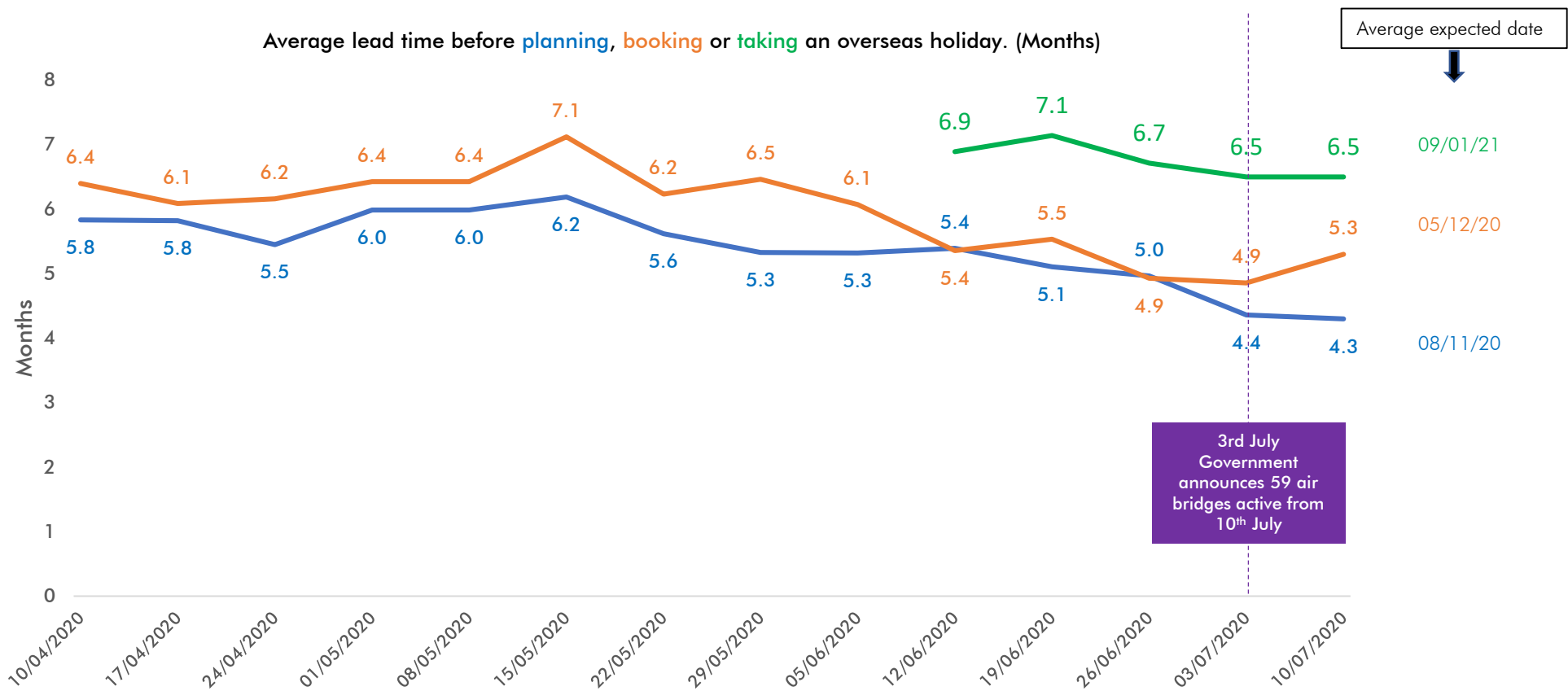
Given what you know today, when do you anticipate doing the following? Base: All respondents n=356 (Excludes those not planning on specified activity)

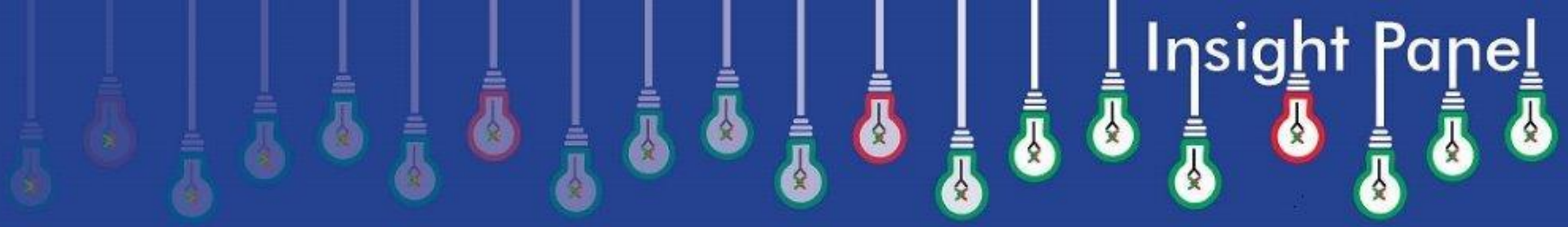
Typical lead time for taking a UK holiday continues to decrease, driven by an increase in those planning their UK break.



Given what you know today, when do you anticipate doing the following? Base: All respondents n=356 (Excludes those not planning on specified activity)

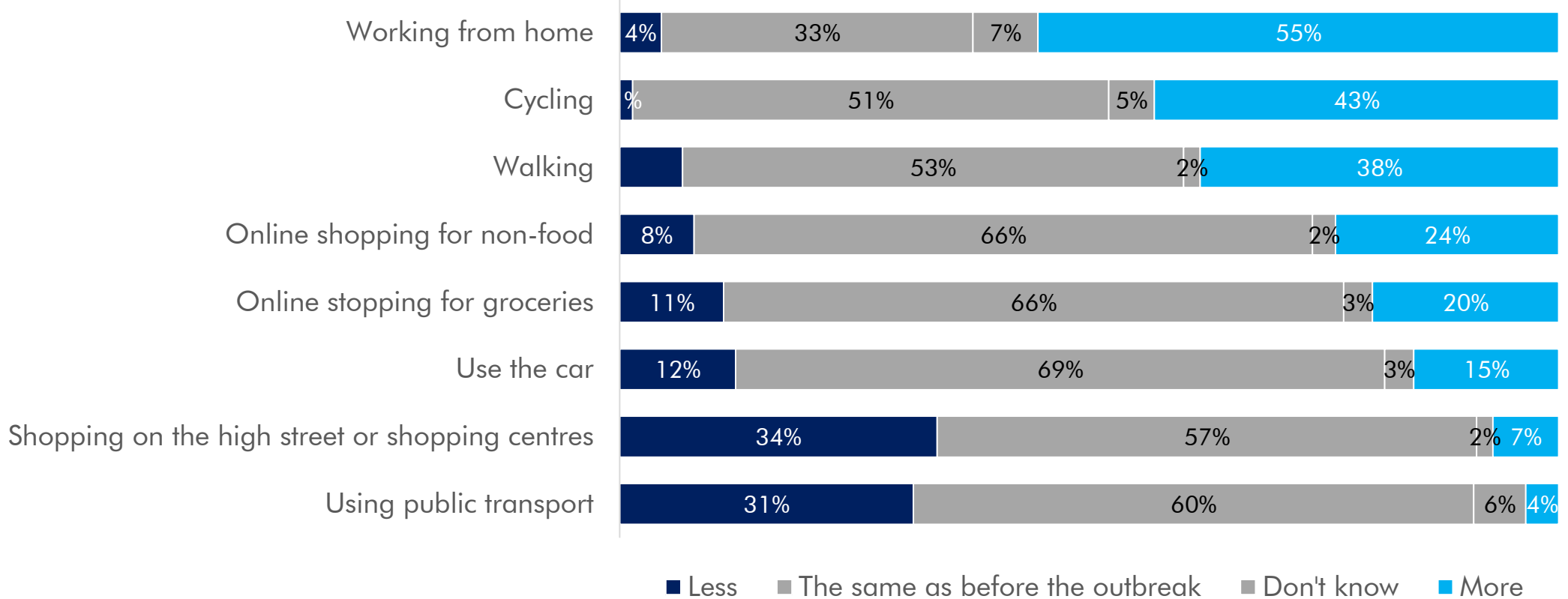
There is still the desire to take an overseas holiday in the winter, however the respondents are pushing back the date for actually booking.





Miscellaneous

Over a third of respondents are still telling us they will be using public transport less when things return to normal compared to before the Covid-19 outbreak, with over half thinking they will be working from home more.

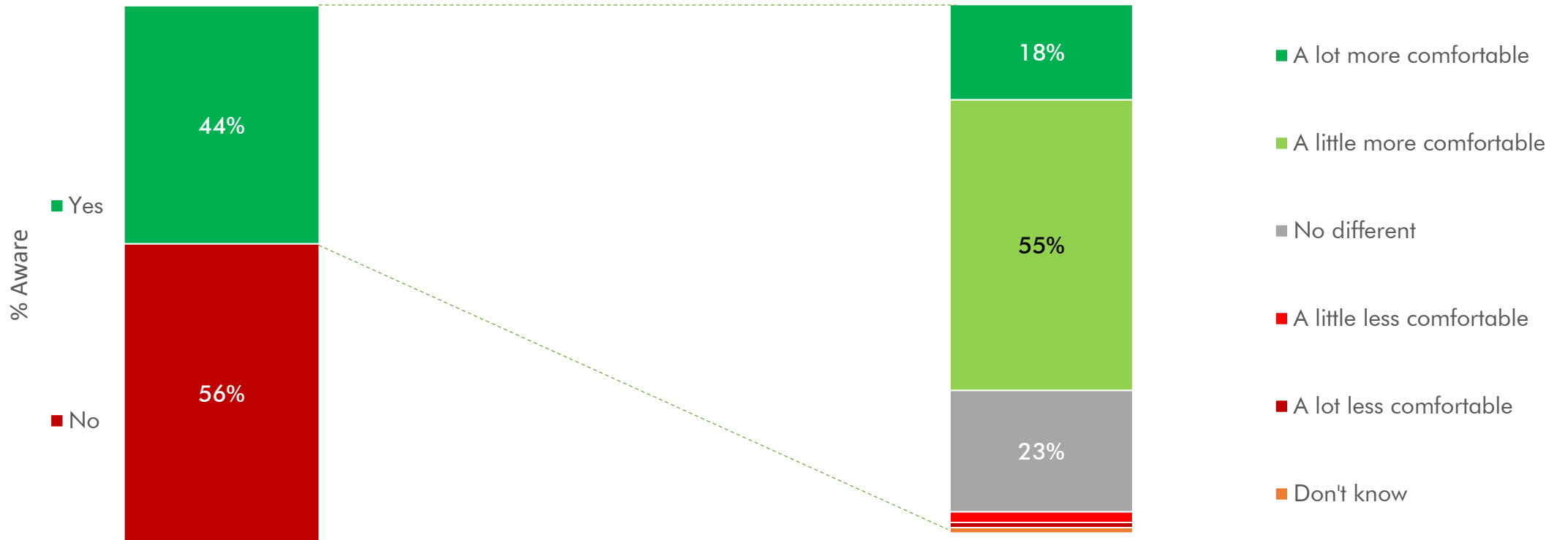


When the current situation is over and things return to normal, do you expect to do any more or less of the following compared to before Covid-19? Base: All respondents n=346 (N/A excluded)

Almost 3 in 4 people found comfort in Metro using 30-day anti-microbial sanitiser as part of an enhanced cleaning regime. (Results from 26th of June 2020)

Awareness of the use of an anti-microbial sanitiser on the Metro (result from 19th June)

Level of comfort taken from knowing about the use of an anti-microbial sanitiser on the Metro



Does the application of the sanitiser to the passenger areas of the Metro make you feel more or less comfortable about travelling on the Metro? Base: All respondents n=363

Previous results.

Topic	Results week number	Links
Health benefits from walking and cycling	Wk1 to Wk11	Week 1 (10.04.20)
Working from home.	Wk1 to Wk8	Week 2 (17.04.20)
NHS Covid-19 contact tracing app	Wk2, Wk6	Week 3 (24.04.20)
Financial wellbeing	Wk3, Wk9	Week 4 (01.05.20)
Public transport, Covid-secure arrangements	Wk4 to Wk8	Week 5 (08.05.20)
Cycling and walking improvements	Wk5	Week 6 (15.05.20)
Air quality improvements	Wk5	Week 7 (22.05.20)
Understanding of "Stay alert"	Wk6	Week 8 (29.05.20)
Understanding of NHS test and trace scheme	Wk9	Week 9 (05.06.20)
Willingness to self-isolate	Wk9	Week 10 (12.06.20)
Passenger requirements for using public transport	Wk9	Week 11 (19.06.20)
Propensity to wear a face covering	Wk10	Week 12 (26.06.20)
UK holiday destinations	Wk10	Week 13 (03.07.20)
Awareness of anti-microbial sanitiser on the Metro	Wk11	
Number of passengers wearing face covering on the Metro	Wk11	
Long haul or short haul overseas holidays	Wk11	
Social distancing	Wk12	
Non-essential retail	Wk13	
Cycling and walking improvements (revisited)	Wk13	
Air quality improvements (revisited)	Wk13	